

THE XERETEC 365 LICENCE HEALTHCHECK



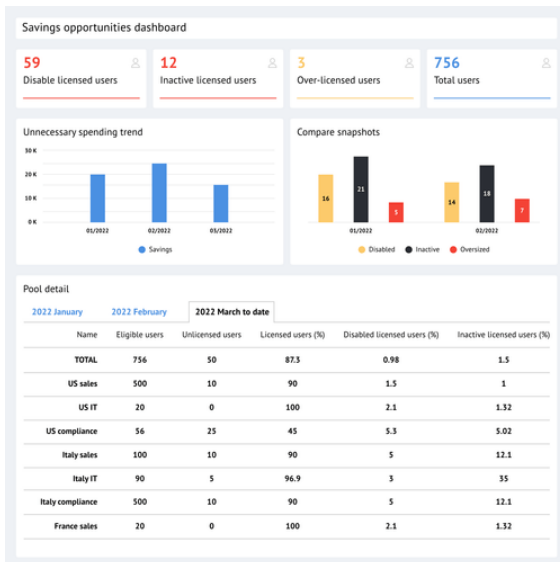
A better licencing strategy beats a discount any day

OUR AIM

Xeretec's aim is to test your existing investments and help you buy smarter
This is achieved by showing you:

- ▶ How your licences are being utilised
- ▶ Where you are exposed to security risk
- ▶ Recommended licence plans based on user requirements to avoid unnecessary expense

FREE
HEALTHCHECK
MONITORING
& REVIEWS



Xeretec's 365 licence healthcheck provides you with a score based on how you're currently managing your:

1. Licences
2. Exchange Online
3. Security & identity
4. SharePoint & OneDrive
5. Teams

We also provide continued visibility & quarterly reviews with our licencing specialist for ongoing recommendations

WHAT WILL YOU ACHIEVE?

The collection of data across the 22 Microsoft portals

- ▶ The business can view and control their entire Microsoft 365 tenant from one pane of glass

Licence optimisation

- ▶ Eliminate wasted licences and get the most out of your Microsoft 365 spend

Align to security best practises

- ▶ Gain visibility of Microsoft 365 attempted logins and if MFA is activated across all users

Data loss prevention

- ▶ Monitor OneDrive & SharePoint files being shared with external parties and identify guest users within Teams and security groups